



INNOVATING INITIAL TEACHER EDUCATION

ABOUT ITELab

ITELab (Initial Teacher Education Lab) is co-ordinated by European Schoolnet and co-funded under the European Commission's Erasmus+.

It is a Knowledge Alliance project between higher education institutions and industry.

Project duration is from January 2017 to December 2019.

AIMS

- Addressing the issues of how student teachers currently receive training on the pedagogical use of ICT, and the mainstreaming of innovative pedagogical practice that involves ICT
- To foster innovation and knowledge exchange in Initial Teacher Education (ITE), creating a sustainable platform for on-going ITE University-Industry exchange under the umbrella of the EUN Future Classroom Lab (fcl.eun.org) initiative.

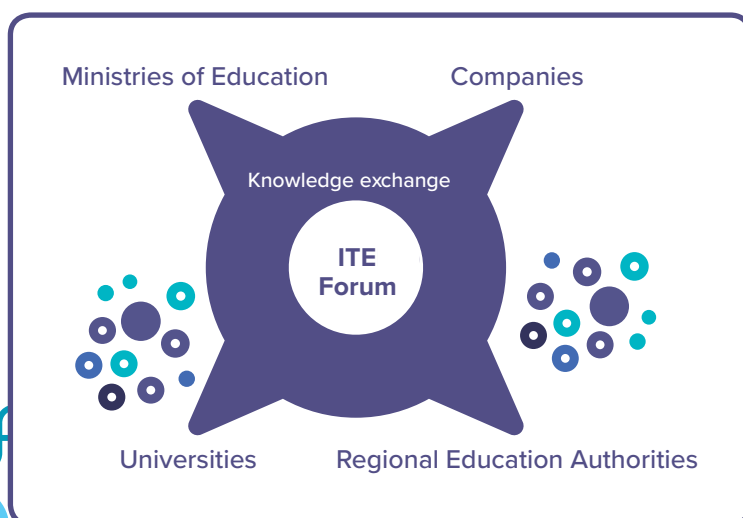
UNIVERSITIES - INDUSTRY - MINISTRIES/REGIONS: JOIN ITELab AS AN ASSOCIATE PARTNER

- **Become part of a sustainable network** – ITE Forum, to share knowledge and best practices in the pedagogical use of ICT in initial teacher education (ITE).
- **Input to recommendations** on how to best support new entrants to the teaching profession, linking to schools and ongoing professional development.
- **Get inspired** on how to innovate ITE in terms of teacher digital competences to make them stand out in the C21st classrooms.
- **Preview and pilot** new open source course modules and student teacher online training (MOOC) being developed by project partners.

WHY THIS PROJECT?

It is necessary to:

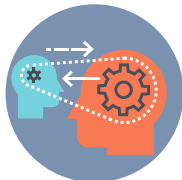
- Support and prepare student teachers for dynamic C21st classrooms, with the digital competences required for the use of ICT in teaching and learning.
- Better integrate ICT within ITE curricula and boost innovation within higher education institutions.
- Address the 'disconnect' between ITE and the continuing professional development of teachers.



ITE FORUM: FUTURE TEACHERS - FUTURE CLASSROOMS - INNOVATION OF CURRICULUM



ARTICLES



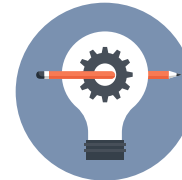
EXCHANGE



WEBINARS



TOPICS



RESOURCES



PILOTS

HOW RECOMMENDATIONS TO ITE INNOVATION WILL BE CREATED IN ITELab?

Existing and developing frameworks defining teacher educator skills and competences will be used in ITELab to inform the pedagogical design of the modules and student MOOC., including the **DigCompEdu framework** (<https://ec.europa.eu/jrc/digcompedu>), TPACK (www.tpack.org) and MENTEP's (www.mentep.eun.org) new online self-assessment tool (TET-SAT) for teachers to progress their Technology-Enhanced Teaching (TET) competence at their own pace.

The **ITE Forum** brought to you by ITELab, in collaboration with the **Future Classroom Lab** and **Next-Lab**, provides the platform to exchange between all interested stakeholders (university, industry, policymakers), on initial teacher education (ITE) and developing the pedagogical use of ICT for future teachers. The ITE Forum will facilitate the exchange of knowledge and resources, supported by a programme of webinar discussions linked to the latest research findings, case studies, news and results from pilots and projects with universities; building the recommendations for innovation in ITE. More info [here](#).

KEY ACTIVITIES FOR ALL STAKEHOLDERS TO ENGAGE WITH:

Monthly: ITE forum: monthly exchange between Universities, Industry and Policy-makers.

Spring 2019: Full pilot of ITELab modules and student teacher MOOC. Open invitation to all universities training future teachers to join this international collaboration. <http://itelab.eun.org> for details.

ITELab PARTNERS:



Coordinator:

[Link to ITELab Associate Partners](#)

Find out more at

[www http://itelab.eun.org](http://itelab.eun.org)

[#ITELab_eu](#)



Co-funded by the Erasmus+ Programme of the European Union

This publication was created with the financial support of the Erasmus+ Programme of the European Union. This publication reflects the views only of the authors and the European Commission cannot be held responsible for any use that may be made of the information contained herein.